



# State of Our Schools

*Presented by*

Superintendent  
Serita D. Beamon



# The School Board of Seminole County



**Kelley Davis**  
Board Member



**Dr. Robin Dehlinger**  
Board Member



**Kristine Kraus**  
Chair



**Autumn Garick**  
Vice-Chair



**Abby Sanchez**  
Board Member



# About SCPS

- ✓ **13th largest school district in Florida**
- ✓ **57th largest school district nationally**
- ✓ **More than 59,000 students and nearly 7,000 employees**

SCPS is a leader in education throughout Central Florida and the State and is widely recognized as a Premier National School District.

37 Elementary Schools

12 Middle Schools

9 High Schools

6 Special Centers, PSI High (Problem Solving Incubator), and Seminole Virtual School





# Who We Are

**50%** of SCPS students are on free or reduced lunch

**17%** of our enrollment are students with disabilities

**9%** of SCPS students are in gifted programs

**8%** of SCPS students are English Language Learners (ELLs)

2024-2025 District Demographics	
White	40%
Hispanic	33%
Black	14%
Asian	7%
Multi Racial	5%
Other	1%





<b>Identified McKinney-Vento Homeless Students</b>	<b>3,611</b>
Sharing Housing due to Eviction or Economic Hardship	2,561
Motels/Hotels	535
Emergency Shelter/DV Shelter	111
Unsheltered: Car/Park/Outside	404
<i>Unaccompanied Homeless Youth (UHY)</i>	<i>418</i>
Students in Foster Care	420
Students Identified as Free/Reduced Lunch Status	30,659



Seminole County  
Public Schools

POINTS  
**OF PRIDE**





Seminole County Public Schools is designated as an  
***Academically High-Performing  
School District***

By the Florida Department of Education



FLORIDA DEPARTMENT OF  
**EDUCATION**  
fldoe.org

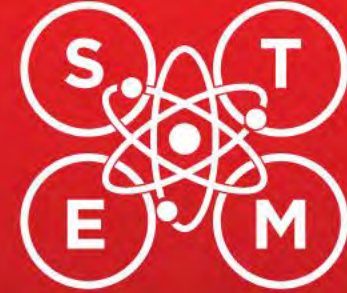




**A**  
**Rated**



**ACADMICALLY  
HIGH  
PERFORMING**



**1# IN STEM  
EDUCATION**

**SEMINOLE COUNTY PUBLIC SCHOOLS**



#1

**SEMINOLE COUNTY  
PUBLIC SCHOOLS**





## All Districts

	Total Pts	Percentage Pts	District Grade	District Rank 2025	District Rank 2024
Nassau	888	74	A	1	3
St. Johns	852	74	A	2	2
Walton	874	73	A	3	1
Lafayette	870	73	A	4	1
Indian River	849	71	A	5	9
Collier	848	71	A	6	7
Sarasota	836	70	A	7	5
Miami-Dade	827	69	A	8	8
Sumter	822	69	A	9	6
<b>Seminole</b>	<b>818</b>	<b>68</b>	<b>A</b>	<b>10</b>	<b>12</b>
Wakulla	817	68	A	11	11
Broward	811	68	A	12	15
Pinellas	805	67	A	13	15
Gilchrist	794	66	A	14	10
Clay	793	66	A	15+	14
Okaloosa	793	66	A	15+	17
Santa Rosa	793	66	A	15+	13
Palm Beach	791	66	A	18	16
Liberty	790	66	A	19	22
Orange	789	66	A	20	20

## 14 Largest Districts

	Total Pts	Percentage Pts	District Grade	District Rank 2025	District Rank 2024
Miami-Dade	827	69	A	1	1
<b>Seminole</b>	<b>818</b>	<b>68</b>	<b>A</b>	<b>2</b>	<b>2</b>
Broward	811	68	A	3	5
Pinellas	805	67	A	3	3
Palm Beach	791	66	A	5	4
Orange	789	66	A	6	7
Brevard	774	65	A	7	6
Duval	763	64	A	8+	10
Volusia	763	64	A	8+	8
Hillsborough	751	63	B	10	9
Pasco	741	62	B	11	11+
Osceola	739	62	B	12	11+
Lee	715	60	B	13	13
Polk	690	58	B	14	14

## Central Florida Districts

	Total Pts	Percentage Pts	District Grade	District Rank 2025	District Rank 2024
<b>Seminole</b>	<b>818</b>	<b>68</b>	<b>A</b>	<b>1</b>	<b>1</b>
Orange	789	66	A	2	3
Brevard	774	65	A	3	2
Volusia	763	64	A	4	5
Lake	762	64	A	5	4
Osceola	739	62	B	6	6

**#1 IN CENTRAL FLORIDA**

**#2 IN 14 LARGEST DISTRICTS**

**#10 IN ALL DISTRICTS**



**Highest Ranking since 2012 FCAT 2.0 Assessment**

**GRADE 3 ELA**

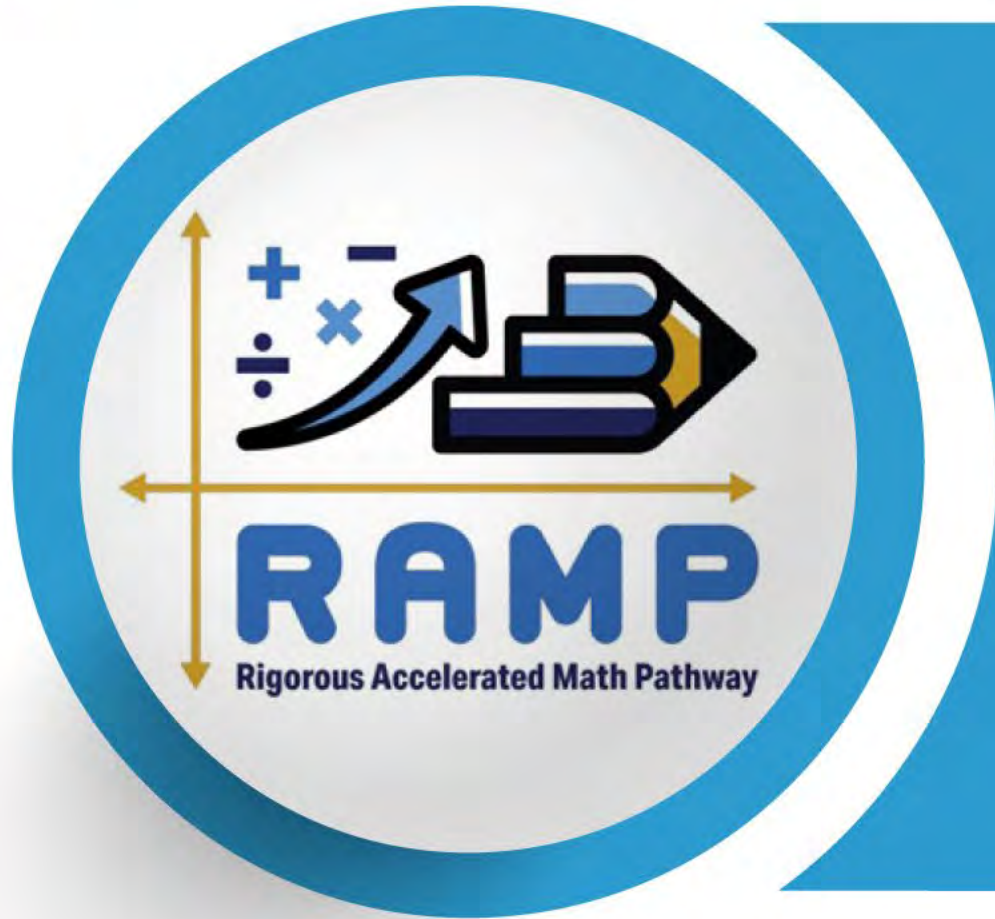
**71%**

**On Grade Level**





# MATH

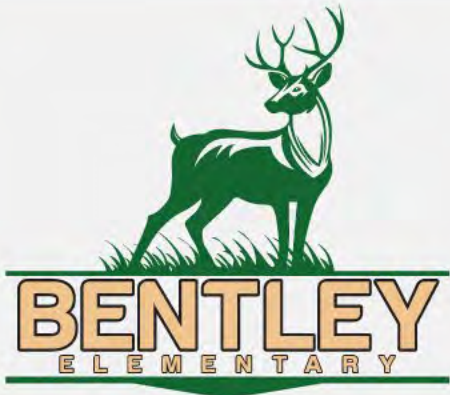


**GRADE 5 TAKING  
GRADE 6 ASSESSMENT**

**99%**  
**On Grade Level**



# CELEBRATING ELEMENTARY SCHOOL SUCCESS



**#1 "A" SINCE 2012**



**#1 "A" SINCE 2011**



**A** rated school  
for the first time

**Way to go  
Innovators!**



**#1 "A" SINCE 2014**

# CELEBRATING MIDDLE SCHOOL SUCCESS



**#1 "A" SINCE 2015**



**#1 "A" SINCE 2015**



**#1 "A" SINCE 2016**



**#1 "A" SINCE 2018**



# CELEBRATING HIGH SCHOOL SUCCESS



**#1 "A" SINCE 2015**



# HIGH SCHOOL ENGLISH/LANGUAGE ARTS

#1

**CENTRAL  
FLORIDA**

#1

**14 LARGEST  
DISTRICTS**

#3

**67 COUNTIES  
IN FLORIDA**



# MIDDLE & HIGH SCHOOL ALGERIA 1

**#1**

**#3 IN  
2024**

**CENTRAL  
FLORIDA**

**#3**

**#5 IN  
2024**

**14 LARGEST  
DISTRICTS**



# ENGLISH LANGUAGE LEARNERS (ELLS) ACADEMIC GAINS



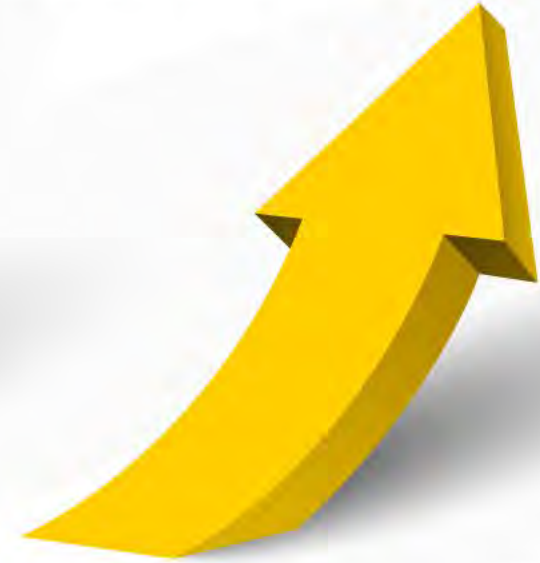
## ELEMENTARY

Increased in **6** of **8**  
accountability areas



## MIDDLE

Increased in **6** of **8**  
accountability areas



## HIGH

Increased in **8** of **9**  
accountability areas



#1

**IN FLORIDA**

**WIDA ACCESS FOR ELLS**



# STUDENTS WITH DISABILITIES ACADEMIC GAINS



## ELEMENTARY

Increased in **8** of **8**  
accountability areas



## MIDDLE

Increased in **7** of **9**  
accountability areas



## HIGH

Increased in **7** of **8**  
accountability areas



# 2024 Graduation Rate\*



89.7%



91.8%



\*Most current information available

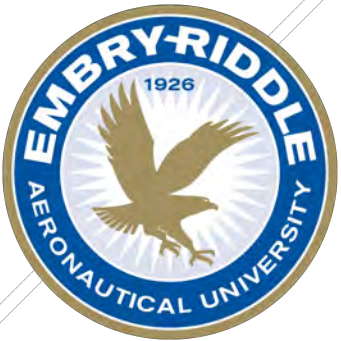


190



**Seminole County Public Schools Students  
Received National Merit Scholar and College  
Board Recognitions in 2025**

**164** SCPS National Merit Scholar and College Board  
Recognitions 2024



# 2,435

Students Dually Enrolled in 2024-2025

2023-2024 Dual Enrolled Students – **2,005**



83

Graduates in the class of 2025  
Earned a Meaningful High School  
Diploma and a High-Quality Associate  
of Arts Degree at the Same Time



# 2023-24

- **7,414 Students Participated**
- **16,097 Exams Administered**
- **69% Pass Rate**

# 2024-25

- **7,522 Students Participated**
- **16,874 Exams Administered**
- **73% Pass Rate**

**SEMINOLE COUNTY PUBLIC SCHOOLS IS A OPEN ENROLLMENT DISTRICT.**



**Verified Scholarships**

**Class of 2025**

**\$106,729,420**



# WHAT'S YOUR

**Enrollment**  
**Enlistment**  
**Employment**



# The Power of Finding your “e”

**WHAT'S**  
**YOUR**





# School Safety Team



**Captain Ron Shaw**  
**Executive Director Kelly Martin**  
**Lt. Shannon Seiple**  
**Manager Mark Rehder**  
**Sgt. Jason Jones**  
**Sgt. Joann Jackson**



# School Safety Partnership

Every school has at least one SRO/SRD.  
Middle and High schools have at least two.

SCSO just added the newest weapon  
detection K-9, Officer Sigi to join K-9 Dragus.

School Resources Officers and Deputies are  
part of the school community and often very  
popular with students and staff alike.





# It Takes a Village

Altamonte Springs Police purchased a new weapon detection K-9 officer, Bailey, who will serve Lake Brantley High, but support the other K-9 officers when needed.





# **What's New at SCPS**



# ROOTS TO RESEARCH

PROGRAM OF EMPHASIS



Florida is one of the fastest growing biotech centers in the U.S. and is home to more than 9% of the nation's 1,450 biotech firms. Students can choose which path of BioScience they want to study.

## **Industrial Biotechnology**

- Biomedical Research
- Bio-manufacturing
- Chemical Engineering
- Pharmaceutical Production
- Environmental Monitoring
- Genomics and Proteomics

## **Agricultural Biotechnology**

- Agricultural Engineer
- Food Safety Specialist
- Livestock Production
- Environmental Consultant
- Animal Nutritionist
- Regulatory Affairs Specialist





# Bear Brigade Fire Academy

Winter Springs High School is the recipient of a \$2.8 million dollar workforce development capitalization incentive grant to create the Bear Brigade Fire Academy in partnership with Seminole State College, Seminole County Fire Department, and Municipality Fire Departments.

**Part of the Public Service Academy called S.E.R.V.E.**  
*(Skills in Emergency, Response, Valor, and Education)*

- **Criminal Justice Operations**
- **Emergency Planning and Response**
- **Introduction to Firefighting**
- **Principles of Teaching**





# CYBERSECURITY

AT LAKE HOWELL HIGH SCHOOL

## \$925,000 Legislative Appropriation

- Sponsored by Senator Jason Brodeur and Representative Susan Plasencia

## Program will Strengthen

- Cybersecurity
- Computer Science
- Navy JROTC
  - Includes an Existing Partnership with Embry-Riddle University



Jason Brodeur  
Senator



Susan Plasencia  
Representative



# Lake Howell High – Auditorium & Cyber Security Classrooms





# Lake Howell High – Auditorium & Cyber Security Classrooms



**Completion by  
December 2026**

**Total Square Footage:  
34,000**

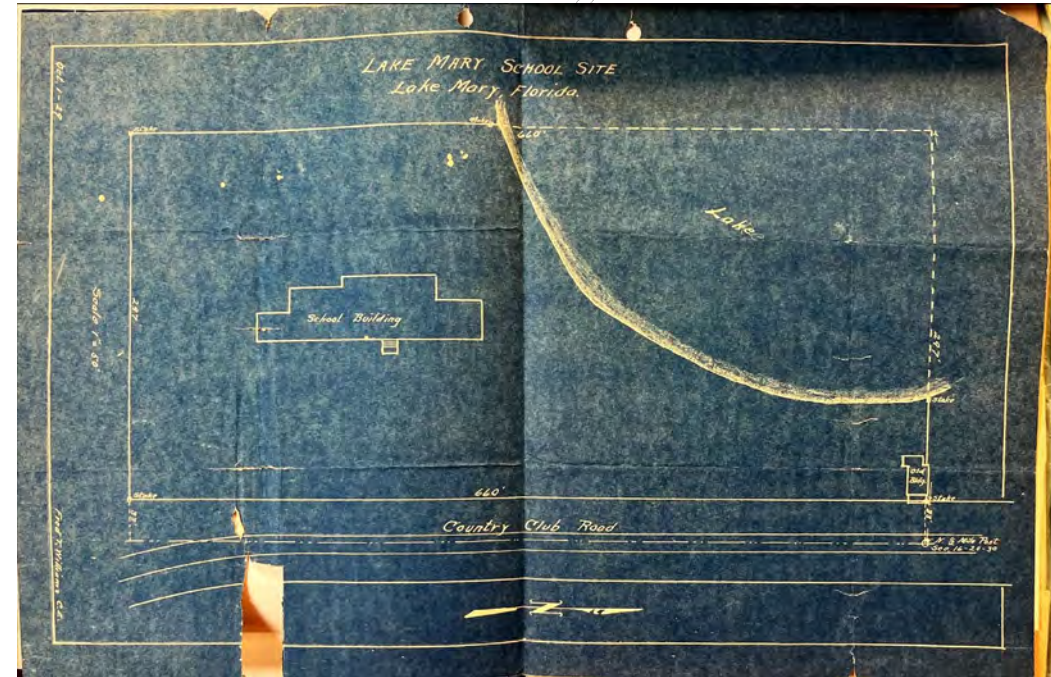
**Estimated Construction  
Cost: \$23,626,000**



# Lake Mary Elementary School



Original Entrance



Original Blueprint



# Lake Mary Elementary School

Adjourned Meeting of September 9th, 1924.

The board of public instruction of Seminole county met in adjourned session at the court house in Sanford, Florida, at three o'clock on the afternoon of Tuesday, September 9th, 1924, with members C.A. Dallas and F.T. Williams present, and Attorney Schelle Maines, Architect E.J. Moughton and Supt. T.W. Lawton in attendance. Chairman W.C.F. Harrison being absent, Mr. C.A. Dallas was elected chairman pro tem.

The chairman pro tem. announced that the first business to come before the board was the opening of bids on the proposed new school buildings at Lake Mary and Chuluota. On motion, carried, reading of the official notice to contractors was waived, and the secretary instructed to open the bids. The bids as opened and tabulated were as follows,--

## BIDS ON CHULUOTA BUILDING

Bidder	Top bid	Time	Deduction #1	Deduction #2
Frank Lossing	\$ 12,158.00	100 days	\$ 510.00	
J.B. Southard	12,500.00	90 "	300.00	
James Wellman	13,166.00	75 "	115.00	
Stout-Dieterly Co.	14,585.00	80	381.00	

(Deduction #1 provides for substitution of concrete blocks for brick)

## BIDS ON LAKE MARY BUILDING

Frank Lossing	\$ 11,378.00	100 days	\$ 510.00	\$ 860.00
J.B. Southard	11,700.00	90 "	300.00	960.00
James Wellman	11,985.00	75 "	100.00	1000.00
Stout-Dieterly Co.	13,750.00	80 "	381.00	1050.00

**Original Bid Documents  
September 1924**

**\$11,378 - \$13,750**





# Lake Mary Elementary School



Demolition of Buildings 1-6 – Complete by August 2025



# Lake Mary Elementary School



Temporary Portable Classrooms



# Lake Mary Elementary School



- 1st Floor 54,300 SF
- 2nd Floor 15,400 SF
- Renovation of Building 8: 43,946 SF
- Exterior Covered Class 1,896 SF
- Number of New Classrooms = 36

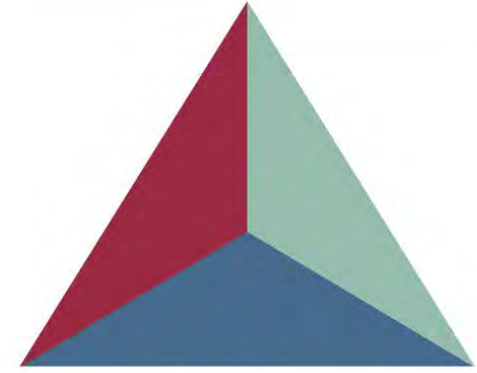


**DECEMBER 2026**



## South Seminole Academy of Career Exploration

- Recipient of the largest magnet grant in SCPS history, with over \$5 million.
- Re-imagine the magnet emphasis and change to an academy of career exploration.
- Students will be placed into a “house” based on their personal interests.



**SOUTH  
SEMINOLE**  
ACADEMY OF  
CAREER EXPLORATION





# South Seminole Academy Houses

**House of Valor** – Courageous thinkers and future leaders who take bold steps toward innovation and integrity.

**House of Legacy** – Reflective, respectful, and purposeful, students honor the past and shape the future.

**House of Horizon** – Forward-thinkers, designers, and explorers with eyes on the future and minds set on change.







# Sanford Middle School Renovations

- Refreshing Flooring and Paint
- HVAC and Fire Alarm Improvements
- Dining Facility Enhancements
- Updating System Efficiencies
- Modernizing Learning Environments

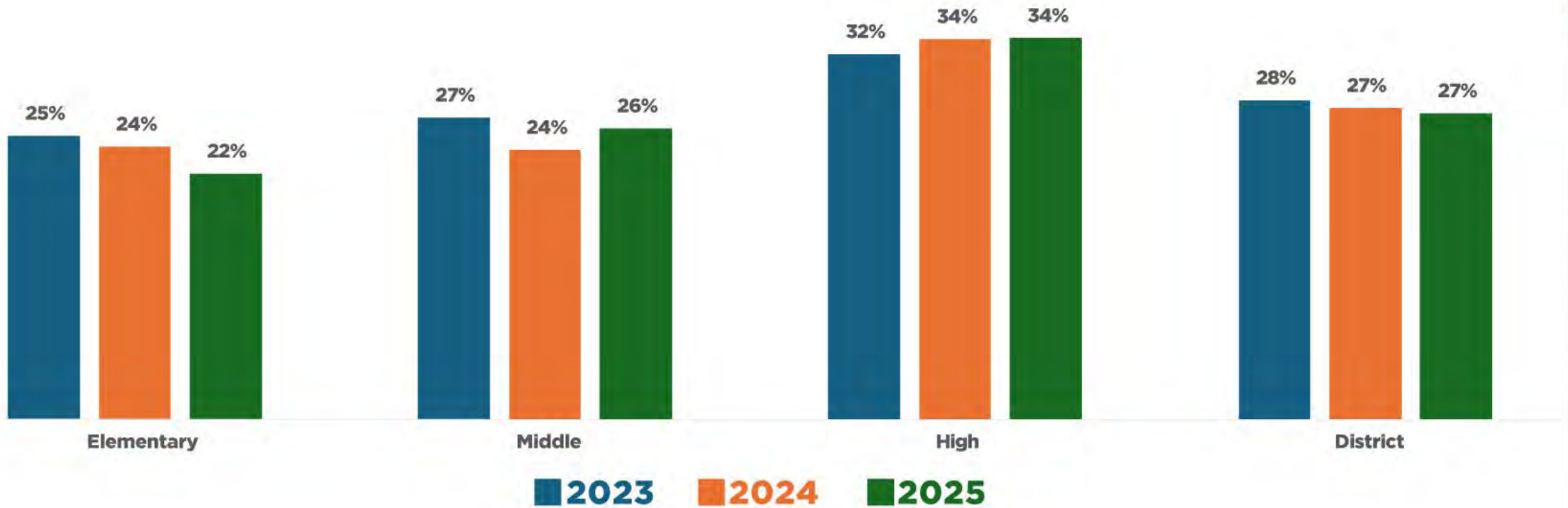




# CHALLENGES



# CHRONIC ABSENTEEISM



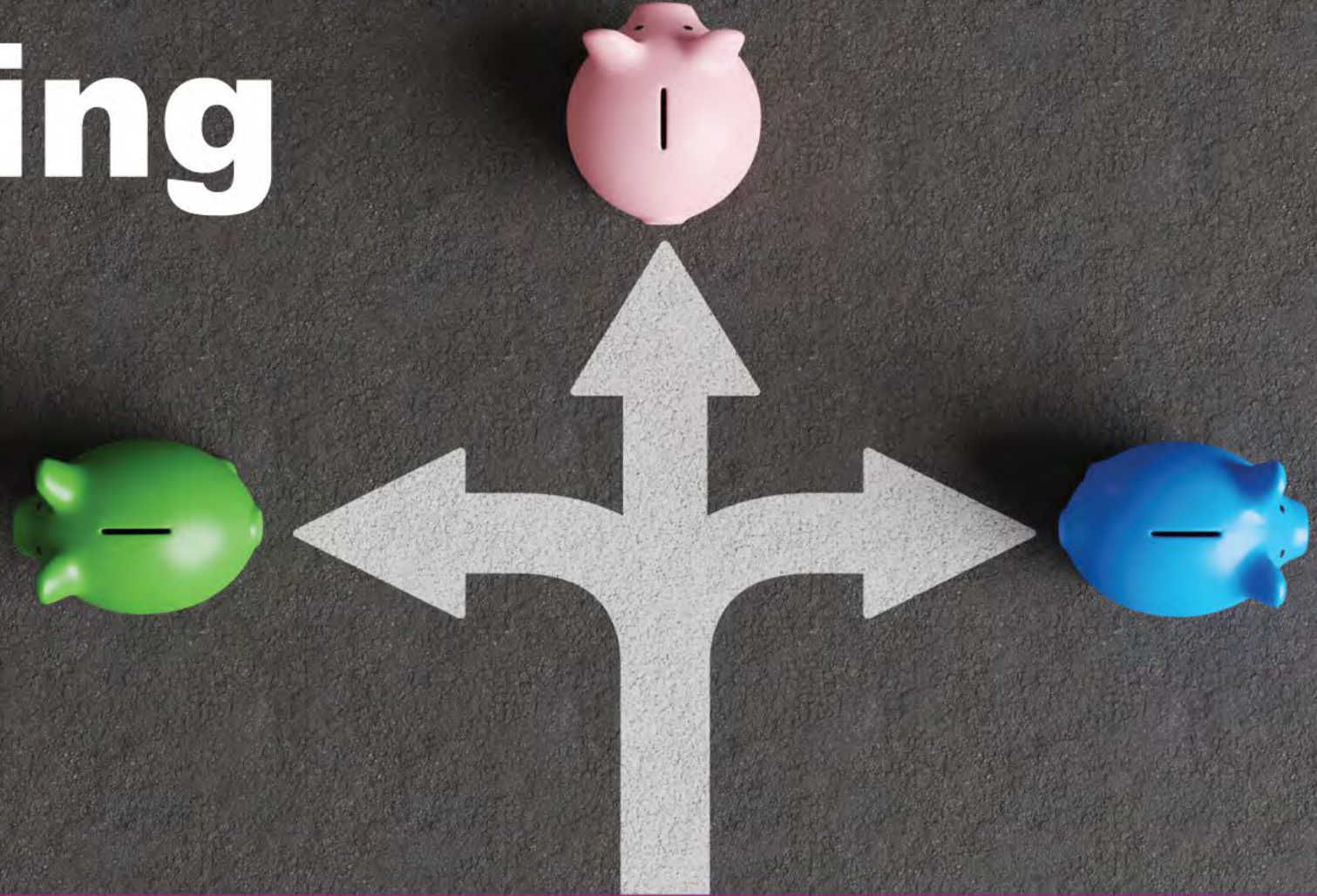


# 24-25 ATTENDANCE & ACHIEVEMENT DATA COMPARISON

	Change in % of # of Students Absent 15+ Days	Change in School Grade 2024 to 2025
Bentley Elementary	<b>-8.3%</b>	<b>C→A</b>
Idyllwilde Elementary	<b>-4.5%</b>	<b>C→B</b>
Milwee Middle	<b>-2.7%</b>	<b>C→B</b>
Tuskawilla Middle	<b>-5.2%</b>	<b>B→A</b>
Seminole High	<b>-4%</b>	<b>C→B</b>
Winter Springs High	<b>-7.3%</b>	<b>A→A</b>



# Funding





# Community Support



# 2024-25 Partners in Education

300+ Partners in Education

51+ Faith-Based Partners



- Sponsor a field trip
- Host supply or food drives
- Provide Incentives
- Mentor
- Volunteer
- Classroom Speakers
- Beautification projects
- Internships
- *And More...*



**Partners  
In  
Education**  
Connect | Collaborate | Celebrate



# All Aboard the Student Success Express

- Mobile Outreach
- Literacy Support
- Community Resource Hub
- Translation Services
- School Choice Exploration
- Employment Opportunities
- Student Registration
- Story Time
- And so much more...





**SURVEY LINK:**



**Help Shape the  
Future of SCPS**

**Participate in Our  
Strategic Plan Survey**



# Connect With Us

Please let us know how you want to connect with SCPS through your Connection Card on the table.

It takes a community to support a strong public school system.



## Connect With Us

Name \_\_\_\_\_  
Organization \_\_\_\_\_  
Title \_\_\_\_\_  
Email Address \_\_\_\_\_  
Phone \_\_\_\_\_

Please explore the categories listed on the back of this card, and select the items you'd like to learn more about.

**Please indicate which areas you'd like to learn more about.**

### Collaborative Opportunities

- Participate in our strategic plan focus group
- Take the strategic plan stakeholder survey
- Become a Dividend volunteer
- Join our Business Advisory Board
- Host a school supply drive
- "Adopt a School"
- Host a drive to fill the school food pantry
- Sponsor or fund certification exam fees for students in your field
- Support the Families in Need Program

### Student-Focused Opportunities

- Share career journeys, industry trends, and skills needed in your field.
- Attend Teach-In to share about your career, hobby, or other educational experience
- Host students for internships, job shadows, apprenticeships, or informational interviews.
- Host a booth at the SCPS Career Fair/Internship Expo.

Survey Link 





# It Takes All of Us





Thank  
you!



**SURVEY LINK:**



**Help Shape the  
Future of SCPS**

**Participate in Our  
Strategic Plan Survey**